



INTERNATIONAL REAL ESTATE LOGISTICS SOLUTIONS

**YOUR GATEWAY
TO LOGISTICS PROPERTY**

**TOP OFFERS
ACROSS EUROPE**





INTERNATIONAL REAL ESTATE LOGISTICS SOLUTIONS

INTERNATIONAL REAL ESTATE LOGISTICS SOLUTIONS

IRELS is the only international network of independent professionals specialising in the logistics real estate sector in Europe. The best assets of our network: the human factor, short decision-making circuits, case follow-up by the same person and the mobility of our teams, providing quality, flexibility and a quick response time.

We serve our clients with 1,070 experts in 42 offices through the network, covering 5,500 buildings available. Our members concluded deals of 13 millions sqm in the last 10 years. Based on these, our Single Points of Contact (SPOC) provide tailor-made real estate logistics solutions in :

- ▀ **Strategic consulting,**
- ▀ **Finding logistics buildings available for sale or rent, and**
- ▀ **Project Management.**

Our ambition with this network is to support our clients with their international development.

This network solely consists of independent companies and leaders in their respective countries coming together for a common project: to offer tailor-made real estate solutions based on local expertise and benefiting from an optimal knowledge of the market and its evolution.

Our values :

F - FLEXIBILITY

A - ANTICIPATION, AGILITY

S - SPEED & SHORT DECISION PROCESS

T - TRANSPARENCY

We aim to be the standard in terms of quality and responsiveness in the logistics real estate market, at the European level first and foremost.



TOP OFFERS

AUSTRIA



TOP OFFERS AUSTRIA

01



CITY PARK VIENNA

- Location: Vienna South
- Area: From 1,500 sqm
- Availability: Q4 2024

02



SQUAREBIZZ PARK

- Location: Grossebersdorf / Vienna North
- Area: Up to 10 sqm
- Availability: Immediate

03



LOGISTIC PARK VIENNA SOUTHEAST

- Location: Kottingbrunn
- Area: Up to 35,000 sqm
- Availability: Q2 2024

04



BUSINESSPARK LEBRING

- Location: Graz / Lebring
- Area: From 2,500 sqm
- Availability: Q3 2025

05



LOGISTIC CENTER VILLACH

- Location: Villach / Fürnitz
- Area: Up to 32,000 sqm
- Availability: Q3 2025

06



TIROL CENTER KEMATEN

- Location: Kematen in Tirol
- Area: 64,000 sqm
- Availability: 18 months after FLA

07



DATA CENTER SITE (100 MW)

- Location: Vienna East
- Area: Up to 80,000 sqm
- Availability: To be determined

08



LOGISTIC PARK VIE - SOUTH

- Location: Vienna South / Laxenburg
- Area: Up to 16,500 sqm
- Availability: Q4 2024

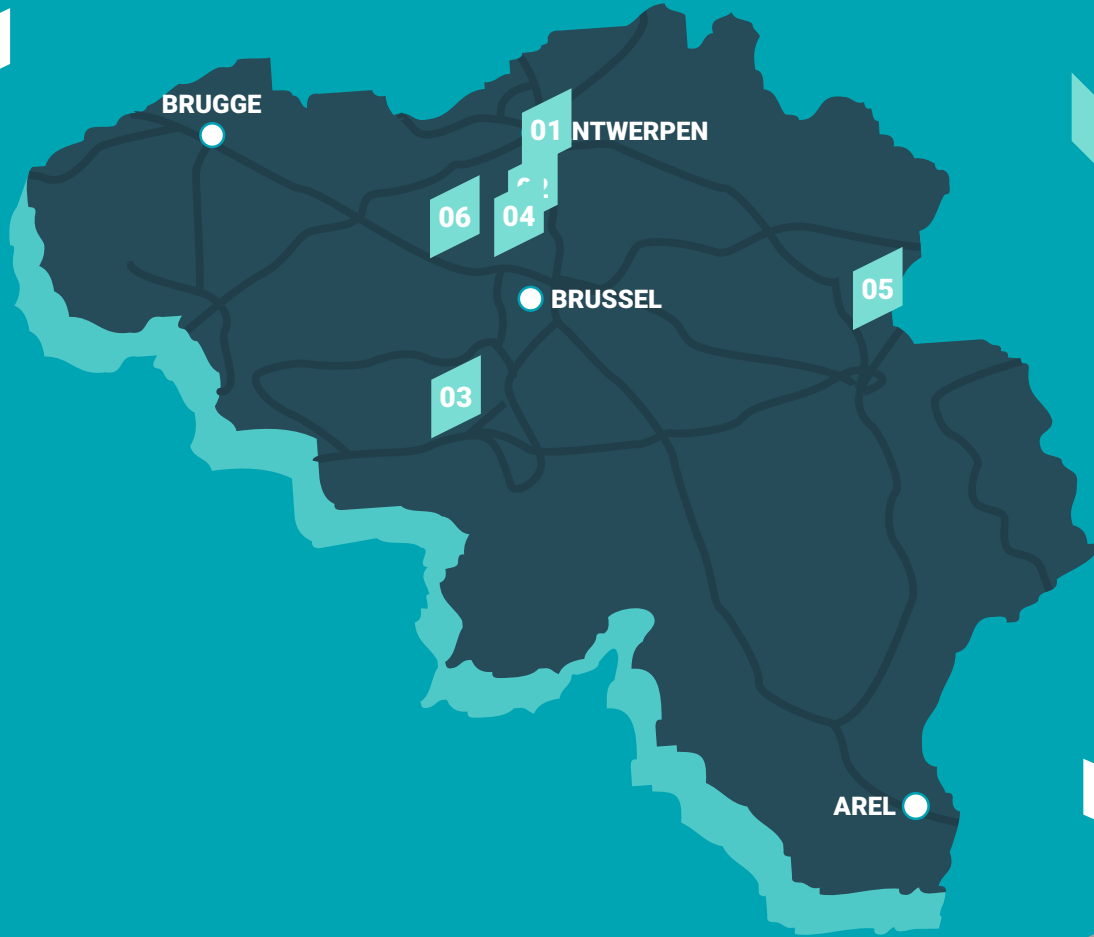
09



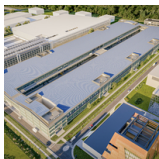
LOGISTIC PARK UPPER AUSTRIA

- Location: Wels/Laakirchen
- Area: Up to 70,000 sqm
- Availability: Q4 2025

TOP OFFERS BELGIUM



01



BLUE GATE ANTWERP

- Location: 2660 Antwerpen
- Area: Up to 80,000 sqm
- Availability: To be determined

02



PROLOGIS PARK BOOM DC2

- Location: 2850 BOOM
- Area: Up to 26,000 sqm
- Availability: Immediate

03



DOUR LOGISTICS CENTRE

- Location: 7370 Dour
- Area: Up to 104,000 sqm
- Availability: To be determined

04



BUILT-TO-SUIT PROJECT

- Location: 2880 Bornem
- Area: Up to 30,000 sqm
- Availability: To be determined

05



SUSTAINABLE DISTRIBUTION HUB

- Location: 3740 BILZEN
- Area: 20,450 sqm
- Availability: To be determined

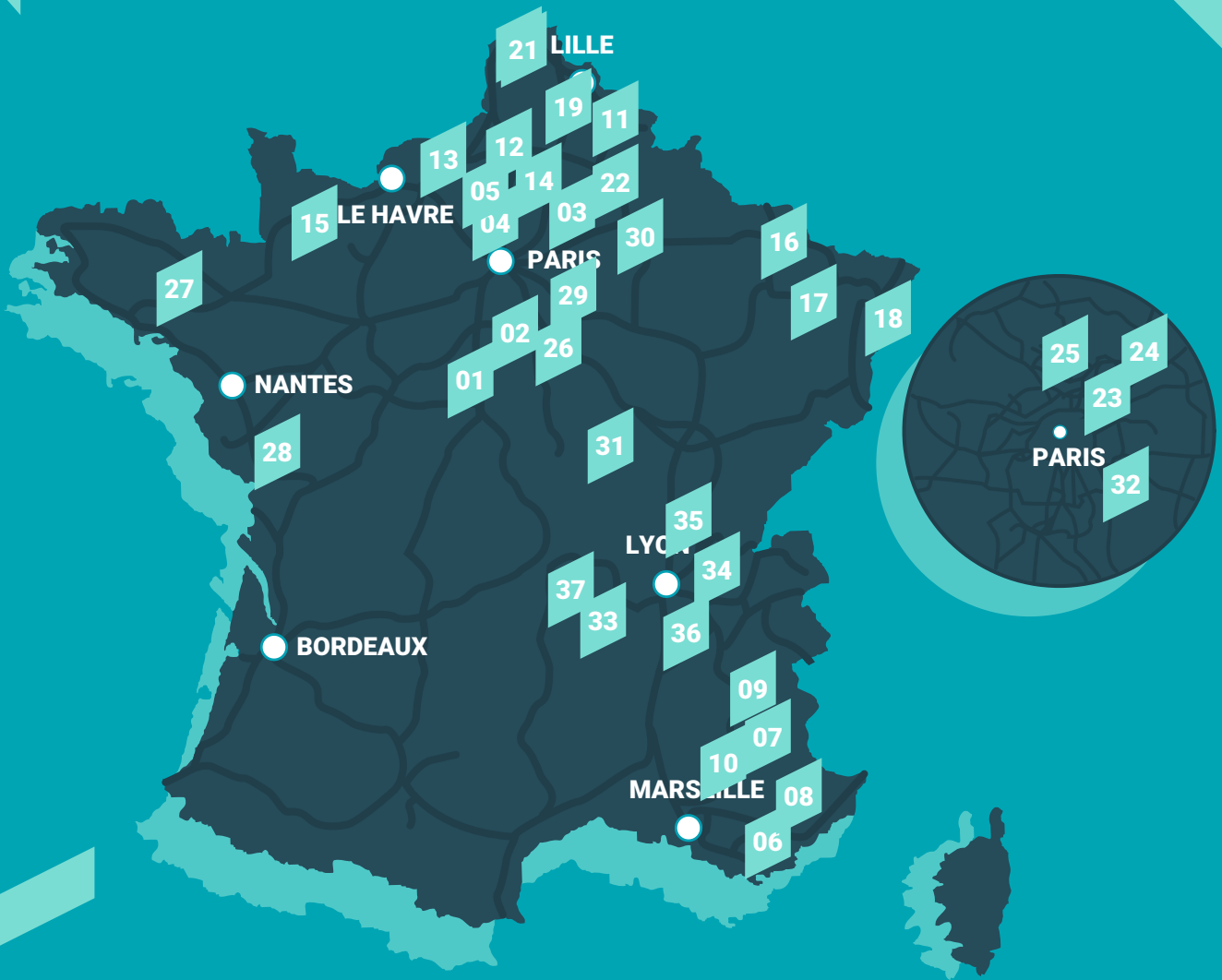
06



MG BIG BEAR

- Location: 9940 EVERGEM
- Area: Up to 180,000 sqm
- Availability: Q4 2024

TOP OFFERS FRANCE



TOP OFFERS FRANCE

01



DEVELOPMENT

- Location: Autreche (37)
- Area: 62,570 sqm
- Availability: March 2024

02



DEVELOPMENT

- Location: Boisseaux (45)
- Area: 94,212 sqm
- Availability: Immediate

03



DEVELOPMENT

- Location: Reissons sur matz (60)
- Area: 111,000 sqm
- Availability: 12 months after FLA

04



DEVELOPMENT

- Location: Longueil-sainte-marie (60)
- Area: 19,000 sqm
- Availability: Immediate

05



EXISTING BUILDING

- Location: Longueil-sainte-marie (60)
- Area: 26,000 sqm
- Availability: Immediate

06



EXISTING BUILDING

- Location: Fos-sur-mer (13)
- Area: 40,000 sqm
- Availability: Q1 2025

07



DEVELOPMENT

- Location: Montelimar (26)
- Area: 29,898 sqm
- Availability: To be determined

08



DEVELOPMENT

- Location: Pierrelatte (26)
- Area: 54,278 sqm
- Availability: Q1 2025

09



DEVELOPMENT

- Location: St Rambert d'Albon (26)
- Area: 28,674 sqm
- Availability: May 2024

10



DEVELOPMENT

- Location: Bollene (84)
- Area: 75,976 sqm
- Availability: 18 months after FLA

11



EXISTING BUILDING

- Location: Denain (59)
- Area: 99,281 sqm
- Availability: Immediate

12



DEVELOPMENT

- Location: Allonne (60)
- Area: 44,703 sqm
- Availability: Q1 2024

13



DEVELOPMENT

- Location: Petit couronne (76)
- Area: 34,000 sqm
- Availability: Q2 2025

14



EXISTING BUILDING

- Location: Saint-Sauveur (80)
- Area: 30,383 sqm
- Availability: Immediate

15



DEVELOPMENT

- Location: Moulton (14)
- Area: 26,005 sqm
- Availability: 12 months after FLA

16



DEVELOPMENT

- Location: Ennery (57)
- Area: 37,500 sqm
- Availability: March 2025

17



DEVELOPMENT

- Location: Fontenoy sur Moselle (54)
- Area: 25,500 sqm
- Availability: February 2025

18



EXISTING BUILDING

- Location: Strasbourg (67)
- Area: 16,200 sqm
- Availability: Immediate

19



EXISTING BUILDING

- Location: Noyelles Godault (62)
- Area: 31,590 sqm
- Availability: Immediate

21



DEVELOPMENT

- Location: Dunkerque (59)
- Area: 86,525 sqm
- Availability:

23



EXISTING BUILDING

- Location: Mitry-Mory (77)
- Area: 10,745 sqm
- Availability: May 2024

25



EXISTING BUILDING

- Location: Marly-la-ville (95)
- Area: 9,800 sqm
- Availability: Immediate

27



DEVELOPMENT

- Location: Gaël (35)
- Area: 30,300 sqm
- Availability: To be determined

29



EXISTING BUILDING

- Location: Chartres (77)
- Area: 11,520 sqm
- Availability: July 2024

31



DEVELOPMENT

- Location: Avallon (89)
- Area: 77,440 sqm
- Availability: Q1 2025

33



EXISTING BUILDING

- Location: Andrézieux Bouthéon (42)
- Area: 61,200 sqm
- Availability: Q1 2024

35



DEVELOPMENT

- Location: Mionnay (01)
- Area: 30,785 sqm
- Availability: 18 months after FLA

20



DEVELOPMENT

- Location: Calais (62)
- Area: 19,959 sqm
- Availability: 12 months after FLA

22



DEVELOPMENT

- Location: Laon (02)
- Area: 97,000 sqm
- Availability: To be determined

24



EXISTING BUILDING

- Location: Saint Mard (77)
- Area: 40,000 sqm
- Availability: July 2024

26



DEVELOPMENT

- Location: Ferrières en Gâtinais (45)
- Area: 118,000 sqm
- Availability: 18 months after FLA

28



DEVELOPMENT

- Location: Sainte Hermine (85)
- Area: 29,700 sqm
- Availability: 12 months after FLA

30



EXISTING BUILDING

- Location: Meaux (77)
- Area: 38,620 sqm
- Availability: Immediate

32



EXISTING BUILDING

- Location: Moissy-Cramayel (77)
- Area: 40,850 sqm
- Availability: Immediate

34



EXISTING BUILDING

- Location: Saint Vulbas (01)
- Area: 25,130 sqm
- Availability: Q3 2024

36



DEVELOPMENT

- Location: Saint Etienne de Saint Geoirs (38)
- Area: 12,900 sqm
- Availability: 12 months after FLA

37



DEVELOPMENT

- Location: Combronde (63)
 - Area: 31,600 sqm
 - Availability: Q1 2025
-

TOP OFFERS GERMANY



TOP OFFERS GERMANY

01



LOGISTICS PROPERTY

- Location: Fredersdorf-Vogelsdorf
- Area: 55,000 sqm
- Availability: Q4 2025

02



INDUSTRIAL PROPERTY

- Location: Deißlingen
- Area: 3,861 sqm
- Availability: 2025

03



LOGISTICS PROPERTY

- Location: Wiesau
- Area: 27,968 sqm
- Availability: Q2 2025

04



LOGISTICS PROPERTY

- Location: Hof
- Area: 20,100 sqm
- Availability: Q2 2025

05



LOGISTICS PROPERTY

- Location: Kandel
- Area: 15,601 sqm
- Availability: Q3 2025

06



STORAGE HALL

- Location: Bad Wünnenberg
- Area: 5,558 sqm
- Availability: Immediate

07



LOGISTICS PROPERTY

- Location: Lauchringen
- Area: 3,455 sqm
- Availability: Immediate

08



INDUSTRIAL PROPERTY

- Location: Zeithain
- Area: 14,392 sqm
- Availability: Immediate

09



STORAGE HALL

- Location: Oberthulba
- Area: 6,085 sqm
- Availability: Immediate

10



LOGISTICS PROPERTY

- Location: Norderstedt
- Area: 51,300 sqm
- Availability: To be determined

TOP OFFERS NETHERLANDS



TOP OFFERS NETHERLANDS

01



SEINEHAVEN

- Location: Rotterdam Botlek (Port area)
- Area: 24,000 sqm
- Availability: June 2020

02



RHENUS TERMINAL

- Location: Maasvlakte Rotterdam (Port area)
- Area: 40,000 sqm
- Availability: Immediate

03



LOGISTICS CENTRE ALBLASSERDAM

- Location: Alblasserdam
- Area: 25,000 sqm
- Availability: Q4 2021

04



OUDELAND

- Location: Berkel en Rodenrijs
- Area: 5,400 sqm
- Availability: Q3 2021

05



DTC CAMPUS

- Location: Zoetermeer
- Area: 16,000 sqm
- Availability: Q3 2021

06



ATLASPARK

- Location: Amsterdam (Port area)
- Area: 27,600 sqm
- Availability: Immediate

07



GREEN MOUNTAINS

- Location: Amsterdam Schiphol (Airport area)
- Area: 41,000 sqm
- Availability: 2021

08



CONSTRUCTION WAREHOUSE

- Location: Rotterdam Waalhaven (Port area)
- Area: 10,000 sqm
- Availability: Immediate

09



DISTRIPORT BENELUX

- Location: Rotterdam Pernis (Port area)
- Area: 12,000 sqm
- Availability: Immediate

10



ATLASPARK

- Location: Amsterdam (Port area)
- Area: 40,000 sqm
- Availability: Immediate

11



DISTRIPORT WAALWIJK

- Location: Waalwijk
- Area: 37,000 sqm
- Availability: Q1 2021

TOP OFFERS

POLAND



TOP OFFERS POLAND

01



WAREHOUSE IN GDANSK

- Location: Gdansk, northern Poland
- Area: From 20,000 sqm
- Availability: Q2 2024

02



WAREHOUSE PARK GDANSK NEAR DCT

- Location: Gdansk, northern Poland
- Area: From 2,730 sqm
- Availability: Q2 2024

03



WAREHOUSE PARK IN SZCZECIN

- Location: Szczecin, north Poland
- Area: Up to 34,000 sqm
- Availability: Immediate

04



PROPERTY NEAR POZNAN

- Location: Poznan, western Poland
- Area: 15,600 sqm
- Availability: Immediate

05



WAREHOUSE POZNAN SOUTH

- Location: Poznan, western Poland
- Area: Up to 40,800 sqm
- Availability: Q4 To be determined

06



PROPERTY GORZOW WIELKOPOLSKI

- Location: Gorzow Wielkopolski
- Area: From 12,000 sqm
- Availability: Immediate

07



WAREHOUSE IN WROCLAW

- Location: Wroclaw, western Poland
- Area: Up to 61,000 sqm
- Availability: 12 months after FLA

08



WAREHOUSE IN ZGORZELEC

- Location: Zgorzelec, western Poland, at the Polish-German border
- Area: Up to 217,000 sqm
- Availability: To be determined

09



CITY PARK LODZ WEST

- Location: Lodz, central Poland
- Area: Up to 72,000 sqm
- Availability: Immediate

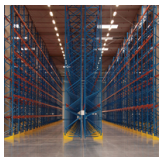
10



WAREHOUSE IN LODZ

- Location: Lodz, central Poland, close to A1 Highway
- Area: Up to 27,000 sqm
- Availability: Q4 2024

11



WAREHOUSE NEAR LODZ II

- Location: Lodz
- Area: 17,000 sqm
- Availability: 6 months after FLA

12



PROPERTY IN RZGOW

- Location: Rzgów, near Łódź, central Poland
- Area: 8,100 sqm
- Availability: Immediate

13



WAREHOUSE PARK RAWA MAZOWIECKA

- Location: Rawa Mazowiecka, central Poland
- Area: Up to 48,300 sqm
- Availability: Immediate

14



PROPERTY WARSAW WEST I

- Location: Warsaw
- Area: Up to 61,000 sqm
- Availability: Immediate

15



WAREHOUSE PARK WARSAW NORTH

- Location: North of Warsaw, Poland
- Area: 61,000 sqm
- Availability: Immediate

16



WAREHOUSE CITY PARK WARSAW

- Location: Warsaw, Poland
- Area: From 1,500 sqm
- Availability: Q2 2024

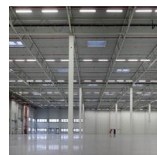
17



WAREHOUSE AIRPORT WARSAW

- Location: Warsaw, Poland
- Area: Up to 40,000 sqm
- Availability: April 2025

18



CITY PARK KATOWICE

- Location: Katowice, southern Poland
- Area: Up to 61,000 sqm
- Availability: To be determined

19



WAREHOUSE NEAR KATOWICE I

- Location: Ruda Śląska, southern Poland
 - Area: Up to 53,000 sqm
 - Availability: To be determined
-

20



WAREHOUSE NEAR KATOWICE II

- Location: Gliwice, southern Poland
 - Area: Up to 41,400 sqm
 - Availability: To be determined
-

21



HALL IN KRAKOW

- Location: Krakow, southern Poland
 - Area: 21,000 sqm
 - Availability: Immediate
-

22



WAREHOUSE PARK RZESZOW

- Location: Rzeszow, south-eastern Poland
 - Area: Up to 46,000 sqm
 - Availability: Q3 2024
-

TOP OFFERS SPAIN



TOP OFFERS SPAIN

01



CONSTANTI - WAREHOUSE

- Location: Constantí (Tarragona)
- Area: 40,000 sqm
- Availability: Immediate

02



TORREJON - WAREHOUSE

- Location: Torrejón de Ardoz (Madrid)
- Area: 8,825 sqm
- Availability: Immediate

03



ATALAYUELA - WAREHOUSE

- Location: La Atalayuela (Madrid)
- Area: Up to 19,500 sqm
- Availability: Immediate

04



GELIDA - WAREHOUSE

- Location: Gelida (Barcelona)
- Area: 19,566 sqm
- Availability: March 2024

05



PUERTA BARCELONA - WAREHOUSE

- Location: Hospitalet de Llobregat (Barcelona)
- Area: From 2,900 sqm
- Availability: August 2024

06



PALAU DE PLEGAMANS - WAREHOUSE

- Location: Palau solita i Plegamans (Barcelona)
- Area: 71,980 sqm
- Availability: To be determined

07



ILLESCAS - LOGISTIC PLATFORM

- Location: Illescas (Toledo)
- Area: 15,093 sqm
- Availability: Q2 2024

08



MIRANDA - LOGISTIC PLATFORM

- Location: Miranda de Ebro (Burgos)
- Area: 128,384 sqm
- Availability: October 2024

09



AZUQUECA - WAREHOUSE

- Location: Azuqueca de Henares (Guadalajara)
- Area: 36,374 sqm
- Availability: Immediate

10



LLAVE EN MANO DISPONIBLE ONTÍG

- Location: Ontígola
- Area: Up to 86,000 sqm
- Availability: 2024

11



LEGANÉS - WAREHOUSE

- Location: Leganés
- Area: 20,468 sqm
- Availability: Immediate

12



PTL NOBLEJAS

- Location: Noblejas
- Area: 300,000 sqm
- Availability: To be determined

13



CITY DOX - GRANOLLERS

- Location: Granollers (Barcelona)
- Area: Up to 14,157 sqm
- Availability: September 2024

14



PLOT OF ILLESCAS

- Location: Illescas
- Area: 4,394 sqm
- Availability: Immediate

15



WAREHOUSE - MEJORADA DEL CAMPO

- Location: Mejorada del Campo
- Area: Up to 19,337 sqm
- Availability: Q3 2024

TOP OFFERS UNITED KINGDOM



TOP OFFERS UNITED KINGDOM

01



SYMMETRY PARK DARLINGTON

- Location: Darlington
- Area: Up to 139,000 sqm
- Availability: 2024

02



THAMES VALLEY

- Location: Thames Valley
- Area: Up to 74,000 sqm
- Availability: 2026

03



RUGBY, MIDLANDS

- Location: Rugby
- Area: Up to 5,000 sqm
- Availability: 2024

04



H PARK

- Location: Manchester
- Area: Up to 32,518 sqm
- Availability: 2024

05



TUNGSTEN PARK

- Location: Witney
- Area: Up to 25,000 sqm
- Availability: 2024

06



WARRINGTON

- Location: Warrington
- Area: Up to 200,000 sqm
- Availability: 2030

07



THRAPSTON

- Location: Thrapston
- Area: Up to 1,000,000 sqm
- Availability: 2025

08



HAWKE RIDGE BUSINESS PARK

- Location: Westbury
- Area: Up to 46,452 sqm
- Availability: 2024

09



LAND AT, EUROWAY PARK B69

- Location: Oldbury
- Area: 23,068 sqm
- Availability: 2024

10



NOVA OXFORD

- Location: Oxford
- Area: Up to 4,064 sqm
- Availability: Q1 2024

11



ST PETER'S ROAD, HUNTINGDON

- Location: Cambridgeshire
- Area: Up to 5,110 sqm
- Availability: 2024

12



FENTON WAY, CHATTERIS

- Location: Cambridgeshire
- Area: Up to 31,258 sqm
- Availability: Q2 2024

13



LINK PARK

- Location: Heathrow, West London
- Area: Up to 8,573 sqm
- Availability: 2024

14



LAND AT CARRINGTON

- Location: Manchester
- Area: Up to 131,523 sqm
- Availability: 2024

15



PURFLEET TRADE PARC

- Location: Purfleet
- Area: Up to 2,476 sqm
- Availability: 2024

16



NOVIO

- Location: Chichester
- Area: Up to 3,471 sqm
- Availability: Q2 2025

CONTACT

LOGISTICS REAL ESTATE PARTNER



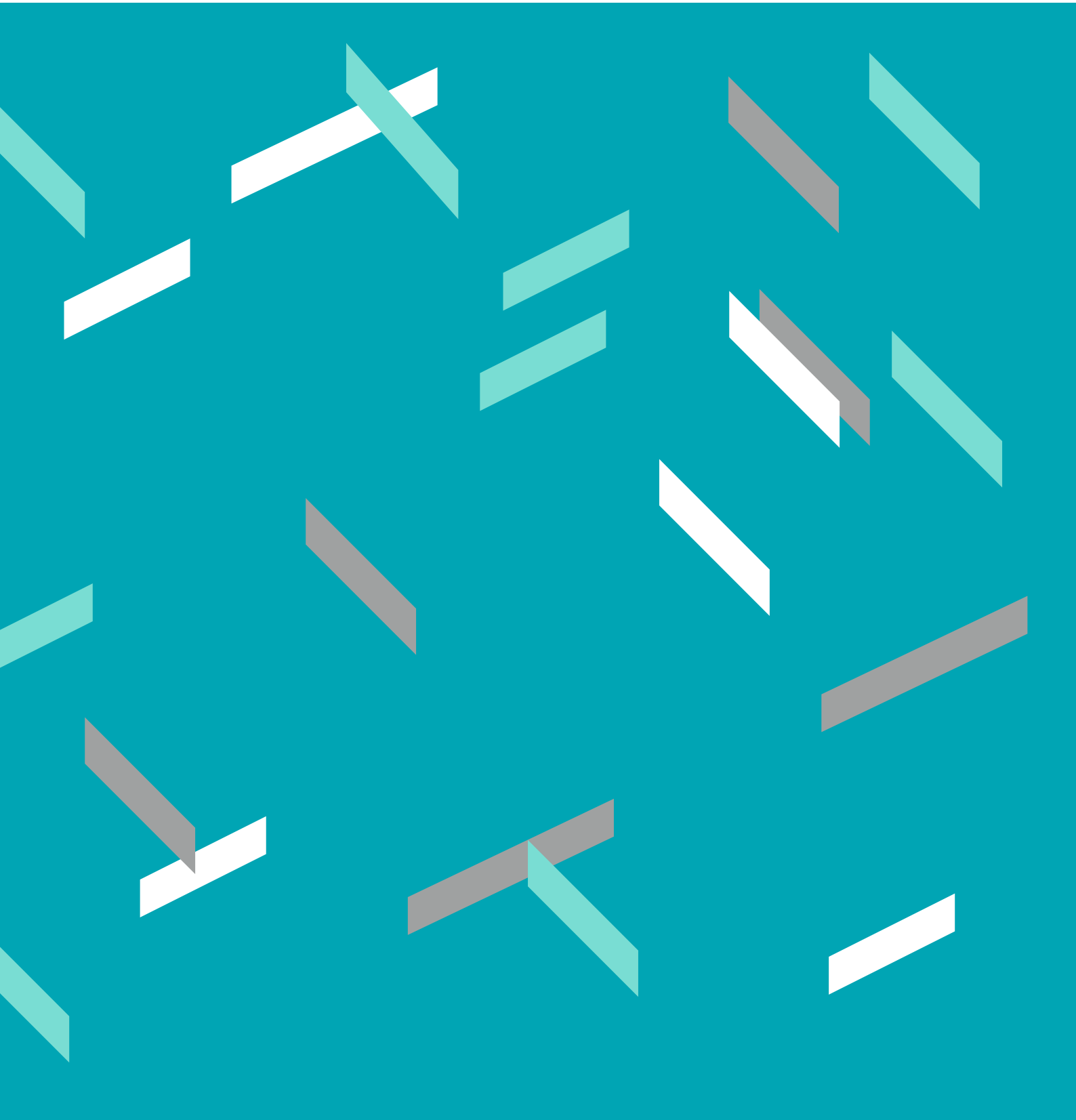
Jean-François MOUNIC

Director

 jfmounic@irels.net

A MEMBER OF IRELS





IRELS

10 quai de Bercy, 94220 CHARENTON LE PONT

P : +33 (0)1 41 79 77 77

www.irels.net